

ENGINE

Make/Model	Isuzu / 4JG1T
Aspiration	Turbo-charged
Displacement (L) / cylinders	187 cu.in. (3.1) / 4
Horsepower (kW) @ rpm	81 hp (60) @2400
Maximum Torque (Nm) @ rpm	190 ft.-lbs. (258) @ 1800

PERFORMANCE

Tipping Capacity - SAE J732 (kg)	5952 lbs. (2700)
Rated Operating Load	
SAE J818 @ 50% tipping capacity (kg)	2976 lbs. (1350)
SAE J818 @ 35% tipping capacity (kg)	2083 lbs. (945)
Breakout Force (kN)	
Bucket	7401 lbs. (32.9)
Lift Arm	7425 lbs. (33)

ELECTRICAL

Battery / CCA	12-volt / 660
Alternator	50 amp

UNDERCARRIAGE

Traction Pump / Traction Drive	Piston / Planetary
Traction Braking	Hydraulic
Drawbar Pull (kN)	11,244 lbf (50)
Roller Type / Track Rollers - each side	Steel / 4
Track Width	18" (457)
Track Contact Length	59" (1496)
Ground Pressure (kg/cm ²)	4.1 psi (0.28)
Travel Speed	
Low	0-4.5 mph (0-7.2)
High	0-6.4 mph (0-10.3)

HYDRAULIC SYSTEM

Operating Pressure (bar)	2988 psi (206)
Auxiliary Hydraulic Flow - standard (L/min)	19.8 gpm (74.9)

CAPACITIES

Fuel Tank (L)	23.8gal. (90.1)
Hydraulic Reservoir (L)	13.7 gal. (51.8)
Engine Oil (L)	10.0 qts. (9.4)
Engine Coolant (L)	16.0 qts. (15.1)

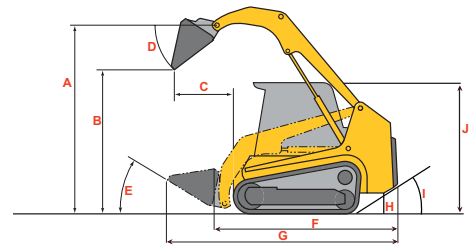
DIMENSIONS & WEIGHT

Operating Weight - approximate (kg)	9590 lbs. (4350)
Maximum Lift Height to Bucket Pin (mm)	(A) 123" (3124)
Dump Height (mm)	(B) 95" (2408)
Reach at Maximum Lift (mm)	(C) 34.4" (874)
Dump Angle	(D) 38.5°
Bucket Rollback at Ground Level (mm)	(E) 31°
Length - without bucket (mm)	(F) 116" (2949)
Length - with bucket (mm)	(G) 146" (3708)
Ground Clearance (mm)	(H) 12.8" (325)
Angle of Departure	(I) 29.2°
Height - to top of ROPS (mm)	(J) 85" (2167)
Width - without bucket (mm)	(K) 70" (1770)
Width - with bucket (mm)	(L) 74" (1880)
Rear Clearance Radius (mm)	(M) 66" (1666)
Front Clearance Radius - with bucket (mm)	(N) 90" (2294)

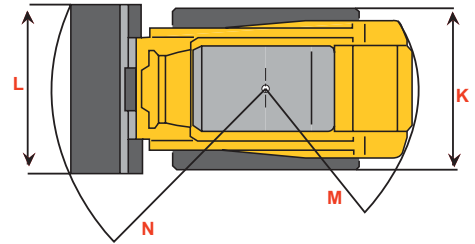
BUCKET

Mounting	Universal Quick-Attach
Capacity - SAE Heaped (m ³)	20.4 cu.ft. (0.58)

CTL70



Reference Diagram



Forget about getting stuck in the mud. Or damaging the landscape. Now there's another way to go about your business. It's the Gehl Compact Track Loader, quickly becoming the most sought after piece of equipment by contractors everywhere. These loaders are bursting with power, yet engineered for total comfort and control. Try one on for size and feel the difference.

Contact your nearest Gehl dealer for more information.

GEHL
www.gehl.com

143 Water Street
West Bend, WI 53095
U.S.A.

Tel: 262-334-9461
Fax: 262-338-7517

CTL70

STANDARD EQUIPMENT

- Joystick (Hydraulic Pilot-Operated) "Hands Only" Controls
- Servo-Controlled Hydrostatic Drive
- All-Tach™ Attachment System (Universal Style)
- ROPS/FOPS - Level I Approved Overhead Guard
- Hydraulic Self-Leveling - Lift Action
- Independent Hydraulic Reservoir with Cooler
- Operator Restraint Bar with Armrests & Adjustable Seatbelt
- Rubber Track Undercarriage System
- Mechanical Lift Cylinder Lock
- Vandalism Lock Provisions - Engine Cover / Rear Door / Fuel Cap
- Yanmar Liquid-Cooled Diesel Engine
- Dual-Element Air Cleaner with Indicator
- Engine Automatic Shutdown System
- Electric Switch Auxiliary Hydraulic Control
- Dual, Interior Cab-Mounted Rear View Mirrors & Single Mounted Rear View Mirror
- Electrohydraulic Push Button - Lift Arm Float Feature
- Full Suspension Seat 6-Way Adjustable
- Two-Speed Hydrostatic Drive System
- Elevated Planetary Final Drives with SAHR Disc Brakes
- Swing-Out Radiator & Hydraulic Oil Cooler
- Fuel, Engine Temperature & Hourmeter Gauges
- Warning Lights
- Glow Plug Starting
- Interlock System for Lift, Tilt Cylinders, Auxiliary Hydraulic Functions & Drives
- Operational Lights - 2 Front, 2 Rear Halogen Lights
- Back-Up Alarm
- Horn
- Hand Throttle



Work Tirelessly

OPTIONAL EQUIPMENT

- Generation II Heating / AC with Sealed and Pressurized Cab
- Dual Hand Controls
- Foot Throttle Kit



Eliminate the headaches of challenging terrain with a machine that will get you out of almost any predicament.

Compact Track Loaders from Gehl are turf-friendly yet highly agile, outperforming most skid loaders in adverse conditions. And with no tires to go flat, these machines work tirelessly, as long as you do.

GEHL®

www.gehl.com

SAFETY IS NO ACCIDENT.

Gehl Company reminds users to read and understand the operator's manual before operating any piece of equipment. Additionally, be sure all safety devices and shields are securely in place and functioning properly.

Gehl Company reserves the right to make changes in design or specifications at any time without notice or obligation.